

## INSTALLATION GUIDE

# OneLab standalone server



# Safety instructions



- The device must always be completely switched off (cables removed) before moving it.
- The user must maintain a distance of at least 20cm from the product (WiFi antenna) while it is being installed and operated.
- The device is intended for indoor use only.
- Device maintenance has to be done exclusively by an Andrew Alliance representative.
- If the device is used in a manner not specified by the manufacturer, the protection provided by the device may be impaired.

## About this manual

Read the user manual before using this device. Strictly follow usage and maintenance instructions provided in the manual. It is the user's responsibility to become familiar with all available information concerning the correct use, care and limitations of these products. If you are uncertain about the correct use or limitations of the products, contact Andrew Alliance service and support. The manufacturer, the distributor and their respective owners, employees, agents and representatives are not responsible or liable for errors or omissions.

Information in this User Manual is subject to change without notice and does not represent a commitment on the part of Andrew Alliance. Andrew Alliance assumes no responsibility for any inaccuracies that may be contained in this User Manual. Andrew Alliance makes no commitment to update or keep current the information in this User Manual, and reserves the right to make improvements to this User Manual and/or to the products described in this User Manual, at any time without notice.

If you find information in this manual that is incorrect, misleading, or incomplete, we would appreciate your comments and suggestions.

**Feel free to contact  
the Andrew Alliance  
support team**



Chat with our support team  
directly in OneLab



Send us an email to  
[aa\\_support@waters.com](mailto:aa_support@waters.com)  
We reply within 1 business day

# What's in the package



OneLab  
standalone server



Power supply



USB WiFi Adapter  
(only for Service & Support use)

## Product overview



# A. Installation of the standalone server

1

Unbox the standalone server.



2

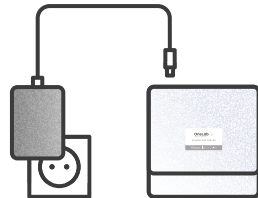
Plug the standalone server into a power source.



If the server doesn't start automatically, please push the **red** power button on the front face.

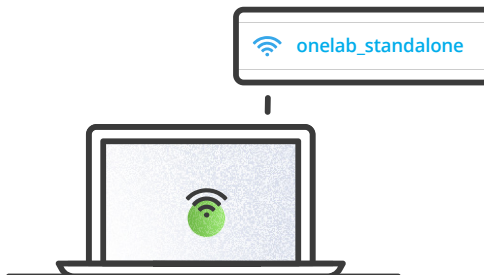


The server should be ready in less than a minute.



3

You will know that the OneLab Standalone Server is ready when you will see the **“onelab\_standalone”** network in the list of Wi-Fi networks.

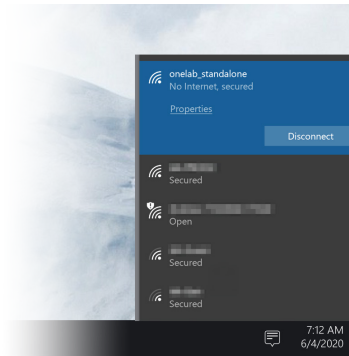


## B. Access to OneLab standalone

1

Connect your computer to OneLab standalone WiFi network

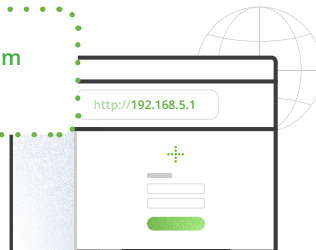
- Go to your Wi-Fi settings and select the network named **"onelab\_standalone"**
- Enter network password **"OneLab\_Standalone"**



2

Launch a web browser, type **http://192.168.5.1** and log into OneLab using these credentials

Work email: **onelab@andrewalliance.com**  
Password: **onelab**

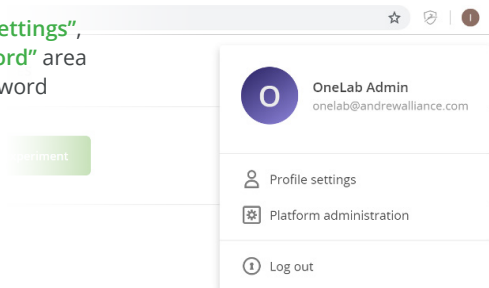


3

**IMPORTANT!**

Change the OneLab credentials

- On OneLab, click on the menu located in the top right
- Click on **"Profile settings"**, go to **"Account Password"** area and create a new password

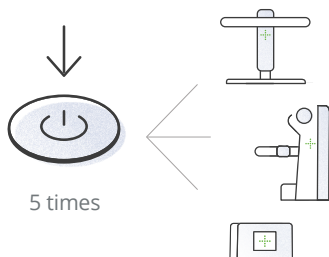


# Annex 1: Pairing your connected devices with OneLab standalone

In case you need to pair the device (e.g. switch from Wi-Fi to Ethernet):

1

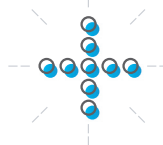
Press 5 times the main button



2

Wait the LED sign to turn blue and blink

After a couple of minutes, the device will inform you when it is in installation mode.



3

Connect your computer, tablet or smartphone to your device

A. Go to your Wi-Fi settings and select the network named

**Andrew-718.xxxx.xxxxx** or **Stand-618.xxxx.xxxxx**

xxxx.xxxxx is the device serial number

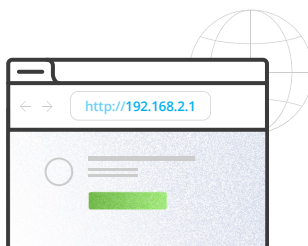
(for Andrew+, you can find it on the door of the **Optical Location Module** and for Pipette+ Stand+, you can find it in the back of your device)



B. The LED sign will stop blinking when it's successfully connected.

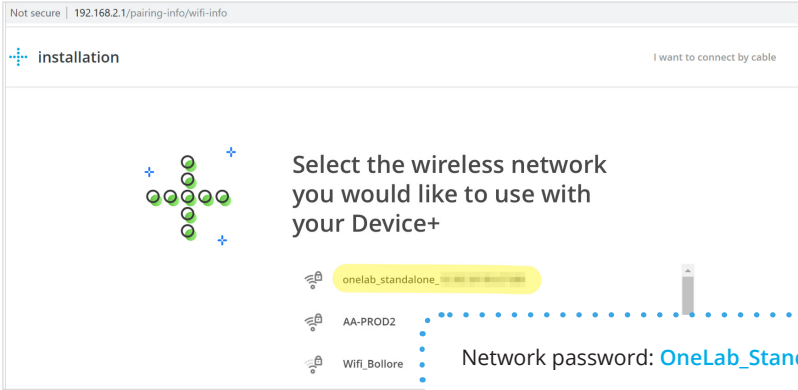
4

Launch a web browser, type <http://192.168.2.1>, follow the on-screen steps to continue installation and take the steps 5 and 6 in consideration (next page).



5

In case of Wi-Fi connection, select the **onelab\_standalone\_xxxxxxxx** wireless network.



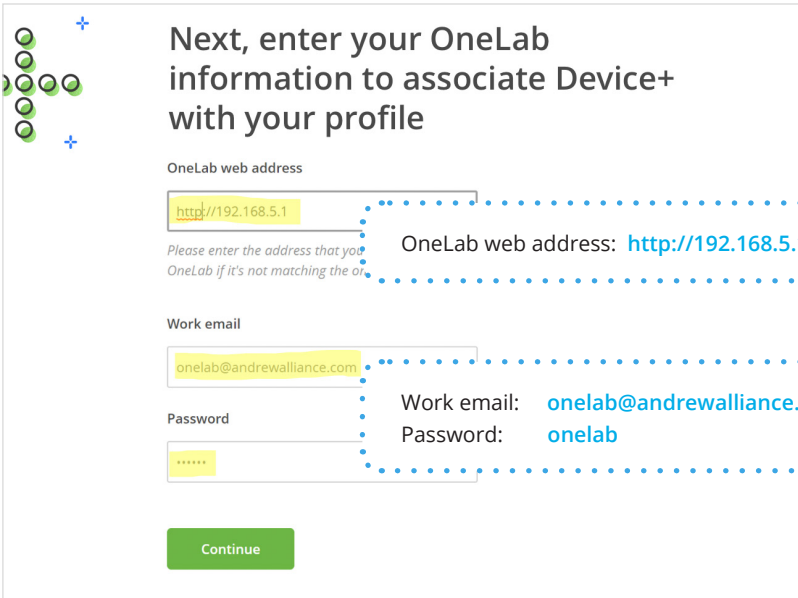
The screenshot shows a web browser window with the address bar displaying "Not secure | 192.168.2.1/pairing-info/wifi-info". The page title is "installation". On the right, there is a link "I want to connect by cable". The main content area features a graphic of a cross made of green circles with a blue plus sign. To the right of this graphic, the text reads "Select the wireless network you would like to use with your Device+". Below this, three Wi-Fi networks are listed: "onelab\_standalone\_XXXXXXXXXX", "AA-PROD2", and "Wifi\_Bollere". The "onelab\_standalone\_XXXXXXXXXX" network is highlighted with a yellow background. A blue dotted box highlights the "Network password: OneLab\_Standalone" text.

xxxxxxxxxx is the MAC address of the Wi-Fi interface of the standalone server.

If wired connection will be used, simply follow the instructions stated in the pairing application.

6

At this step, fill the form with these information then continue the installation.



The screenshot shows a web browser window with the address bar displaying "http://192.168.5.1". The page title is "Next, enter your OneLab information to associate Device+ with your profile". On the left, there is a graphic of a cross made of green circles with a blue plus sign. The form contains four fields: "OneLab web address" with the value "http://192.168.5.1", "Work email" with the value "onelab@andrewalliance.com", "Password" with the value "onelab", and a "Continue" button. A blue dotted box highlights the "OneLab web address: http://192.168.5.1" text. Another blue dotted box highlights the "Work email: onelab@andrewalliance.com" and "Password: onelab" text.

# Annex 2: Power OFF the OneLab server



Never remove the server from the power before switching it off.

Press the red button for 3 seconds and wait until the LED will turn OFF.

Then, you may unplug the device from the power source.

## Technical data

SOC	Intel 10th Generation Quad-Core J4125. Its base operating frequency is up to 2.7GHz
Memory	8GB DDR4
Graphics	Intel UHD Graphics to support 4K HD video playback
Storage capacity	256GB M.2 SSD
Video & audio	<ul style="list-style-type: none"><li>• 2 × HDMI Port (4k @ 60Hz)</li><li>• 1 × Audio Jack (HP &amp; MIC)</li></ul>
USB	<ul style="list-style-type: none"><li>• 2 × USB2.0</li><li>• 2 × USB3.0</li><li>• 1 × Type-C port</li></ul>
Ethernet	2 × Gb Ethernet RJ-45
Wi-Fi	802.11 b / g / n / ac, Bluetooth 4.0
Operating system	Linux
Power	12 V @ 2A
Operating humidity	30% ~ 90% relative humidity, non-condensing
Operating temperature	14-113°F / -10~45°C
Dimensions	124 mm × 113 mm × 41 mm (4.88 in × 4.45 in × 1.61 in)
Weight	0.2950 Kg
Certifications	CE/FCC Class A, RoHS compliant, REACH

Andrew Alliance S.A. (HQ)  
Chemin Grenet 21  
1214 Vernier (Geneve)  
Switzerland  
Phone: +41 22 518 0357

Waters Corporation  
34 Maple Street  
Milford, MA 01757  
USA  
Phone: +1-508-478-2000

[aa\\_contact@waters.com](mailto:aa_contact@waters.com)

